

해상훈련해역(1/6)

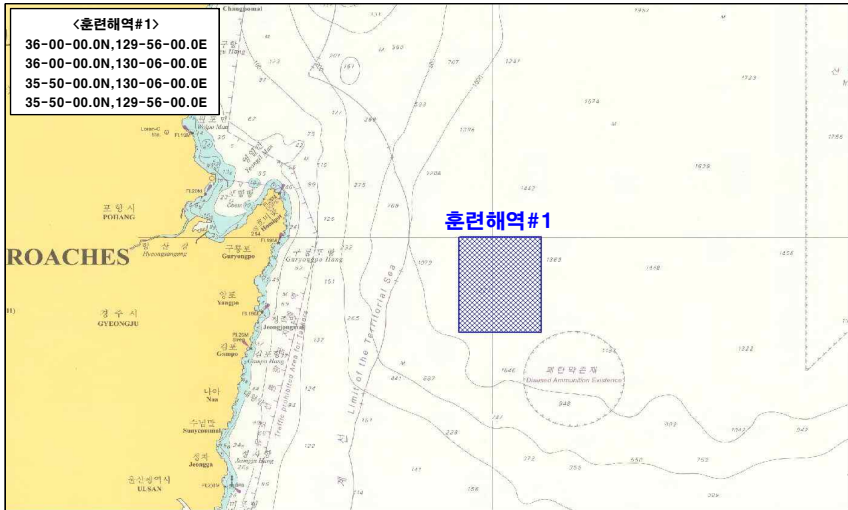
<훈련해역#1>

36-00-00.0N,129-56-00.0E

36-00-00.0N,130-06-00.0E

35-50-00.0N,130-06-00.0E

35-50-00.0N,129-56-00.0E



해상훈련해역(2/6)

〈훈련해역#2〉

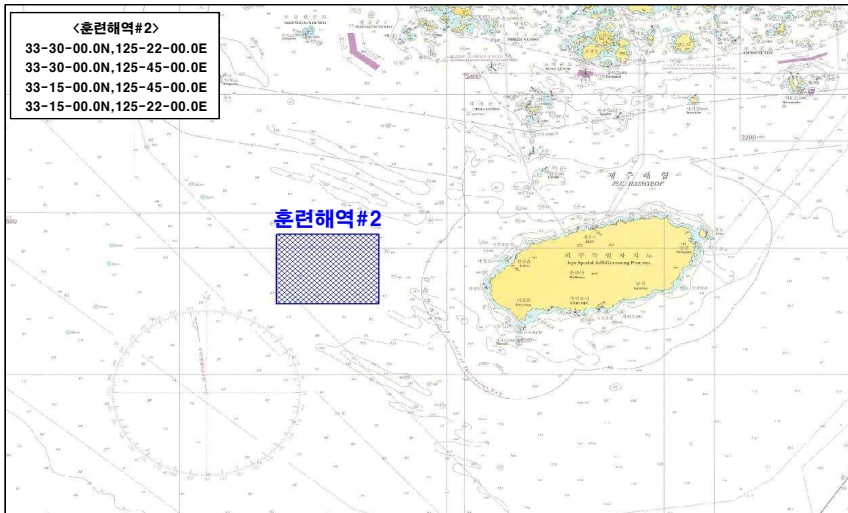
33-30-00.0N,125-22-00.0E

33-30-00.0N,125-45-00.0E

33-15-00.0N,125-45-00.0E

33-15-00.0N,125-22-00.0E

훈련해역#2



해상훈련해역(3/6)

〈훈련해역#3〉

34-57-00.0N,128-49-30.0E

34-57-00.0N,128-51-00.0E

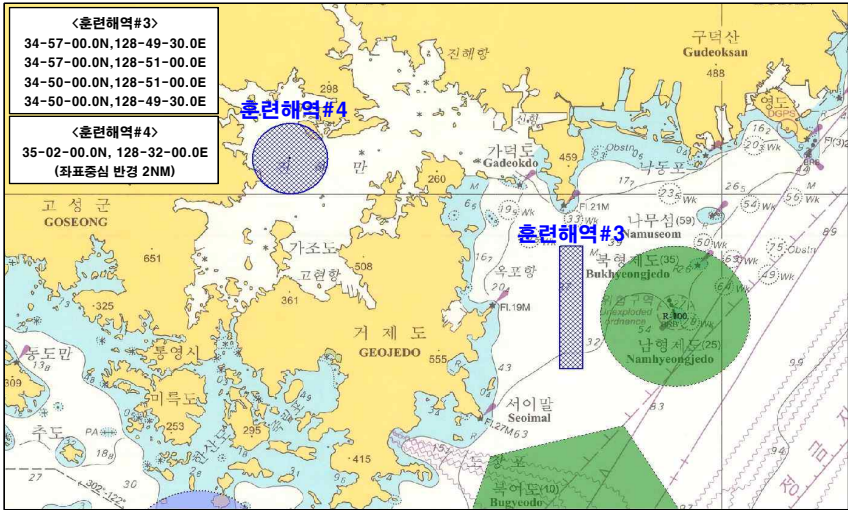
34-50-00.0N,128-51-00.0E

34-50-00.0N,128-49-30.0E

〈훈련해역#4〉

35-02-00.0N, 128-32-00.0E

(좌표중심 반경 2NM)



해상훈련해역(4/6)

<훈련해역#5>

38-00-00.0N,128-45-00.0E

38-00-00.0N,130-30-00.0E

37-00-00.0N,130-30-00.0E

37-00-00.0N,129-25-00.0E

훈련해역#5

구분	항목	단위	기준치	현황
1. 기상	기온	℃	10~25	15
	습도	%	60~80	70
	강수량	mm	0~10	0
	풍속	m/s	0~10	5
2. 해상	파고	m	0~2	1.5
	조류	m/s	0~1	0.5
	해면온도	℃	15~25	20
	해수면고도	m	0~10	5
3. 육상	인구	명	100,000	150,000
	면적	km ²	100	150
	도로	km	100	150
	철도	km	100	150

한국동안남부 해서 오기제도

해상훈련해역(5/6)

<훈련해역#6>

37-04-21.0N,124-50-00.0E

37-05-08.0N,125-36-00.0E

36-35-00.0N,125-36-00.0E

36-35-00.0N,124-50-00.0E

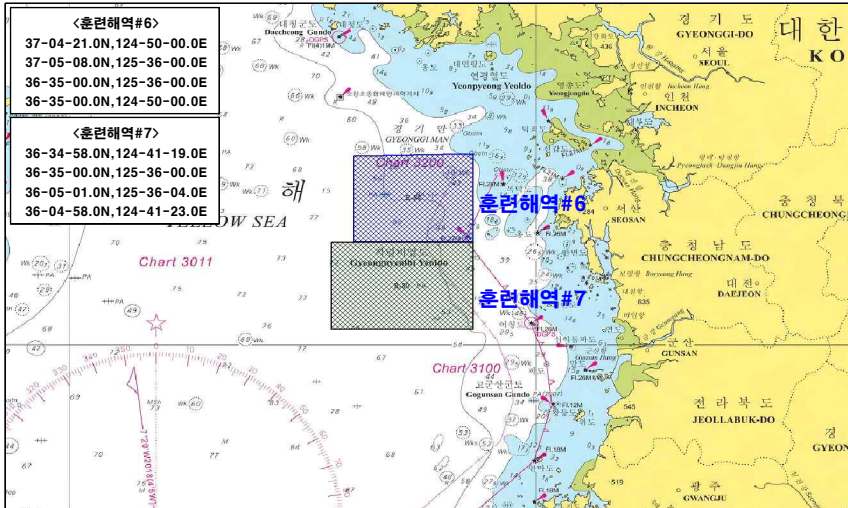
<훈련해역#7>

36-34-58.0N,124-41-19.0E

36-35-00.0N,125-36-00.0E

36-05-01.0N,125-36-04.0E

36-04-58.0N,124-41-23.0E



해상훈련해역(6/6)

<훈련해역#8>

37-05-00.0N,124-00-00.0E

37-05-00.0N,124-30-00.0E

35-40-00.0N,124-30-00.0E

35-40-00.0N,124-00-00.0E

<훈련해역#9>

37-05-00.0N,124-30-00.0E

37-05-00.0N,125-35-00.0E

36-35-00.0N,125-35-00.0E

36-35-00.0N,125-40-00.0E

36-20-00.0N,125-40-00.0E

36-20-00.0N,125-50-00.0E

35-40-00.0N,125-50-00.0E

35-40-00.0N,124-30-00.0E

<훈련해역#10>

36-55-00.0N,123-30-00.0E

36-55-00.0N,124-00-00.0E

35-35-00.0N,124-00-00.0E

35-35-00.0N,123-30-00.0E

